

## PTCC-01 – Programmable “smart” TEC controller



PTCC-01 is the programmable, precision, low noise, thermoelectric cooler controller, intended to operate with VIGO IR detection modules. It is compatible with both classic (MIP, SIP, FIP) and new, programmable PIP preamplifiers.

### Available options:

#### PTCC-01-OEM

- TE C controller with built-in power supply, without housing
- configurable by PC software
- status LED indicator and status/data connector

#### PTCC-01-BAS

- TEC controller with built-in power supply, encapsulated in a small package
- configurable by PC software
- status LED indicator

#### PTCC-01-ADV

- TEC controller with built-in power supply, encapsulated in a small package
- configurable by built-in function keys or PC software
- user interface: LCD and buttons

Specification

Parameter	Value
Temperature stability [K]	$\pm 0.01$ ( $T_{det}=233K$ (-40°C), $T_{det}=0.1K$ )
Temperature readout stability [mK]	max 1 ( $T_{det}=233K$ (-60°C), $T_{det}=0.1K$ )
Detector temperature settling time [s]	25 ( $T_{det}=233K$ (-40°C), $T_{det}=0.1K$ ) 45 ( $T_{det}=233K$ (-60°C), $T_{det}=0.1K$ ) 60 ( $T_{det}=233K$ (-80°C), $T_{det}=0.1K$ )
Maximum TEC current [A]	1.2 (2TE) 0.45 (3TE) 0.45 (4TE)
Output voltage range [V]	min 3, max 14.5
Output current of the built-in power supply [mA]	$\pm 200$ (output voltage: 3...14.5V)
Power supply voltage $V_{sup}$ [V]	min 9, max 16 (wider range available upon request)
Power supply current $I_{sup}$ [mA]	500 ( $I_{TEC}=0.45A$ , $U_{TEC}=7.5V$ )
Series resistance of the connecting cable [mΩ]	1000 (total resistance of the wires supplying TEC element)
Storage temperature [°C]	from -20 to +70
Ambient temperature [°C]	from +5 to +45
Relative humidity [%]	from 10 to 90 (from +5°C to +35°C) from 10 to 50 (> +35°C)



Code description

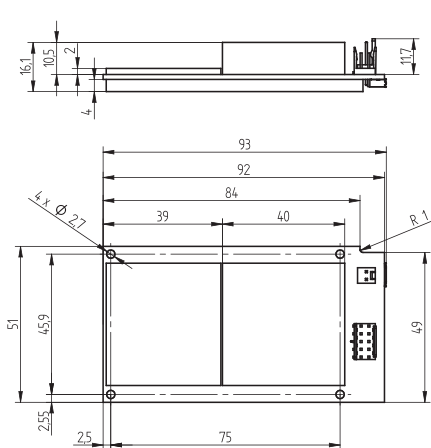
# PTCC-01-BAS

VIGO thermoelectric cooler controller

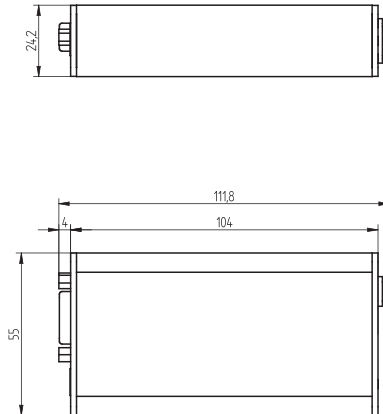
Version:  
 OEM - without package  
 BAS - Basic - with package  
 ADV - Advanced - with package, function buttons and LCD

Dimensions [mm]

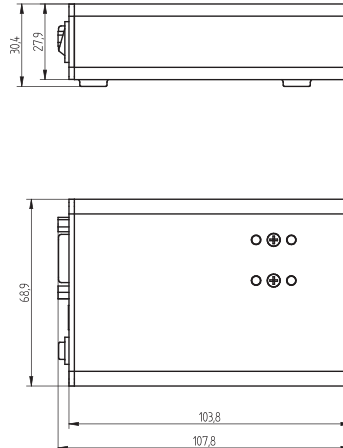
PTCC-01-OEM



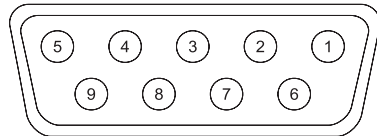
PTCC-01-BAS



PTCC-01-ADV



Power supply and control connector (PTCC-01-BAS and PTCC-01-ADV) - DB9 connector female



Pin number	Symbol	Function
1	TEC+	TEC supply output (+)
2	TEC-	TEC supply output (-)
3	GND	power ground
4	TH1	thermistor input (1)
5	TH2	thermistor input (2)
6	-V <sub>sup</sub>	power supply output (-)
7	+5V	FAN and programmable preamp internal logic auxiliary supply
8	DATA	bidirectional data port
9	+V <sub>sup</sub>	power supply output (+)
metal cover	GND-SH	shield



Power supply connector (PTCC-01-OEM) - KK2 connector male



Pin number	Symbol	Function
1	TECC+	TEC controller supply input (+)
2	TECC GND	TEC controller power ground

Control connector (PTCC-01-OEM) - DUBOX2x5 connector male



Pin number	Symbol	Function
1	TEC+	TEC supply output (+)
2	TEC-	TEC supply output (-)
3	GND	power ground
4	TH1	thermistor input (1)
5	TH2	thermistor input (2)
6	-V <sub>sup</sub>	tower supply output (-)
7	+5V	FAN and PIP preamp internal logic auxiliary supply
8	DATA	bidirectional data port
9	+V <sub>sup</sub>	power supply output (+)
10	GND-SH	shield

Status/DATA connector (PTCC-01-OEM) - Pin Header 1x7



Pin number	Symbol	Function
1	ERR - LED	error indicator
2	LOCK - LED	temperature control loop lock indicator
3	SUP - LED	module power supply on indicator
4	3.3 V	auxiliary supply
5	TXD	transmitted data (RS-232)
6	GND	common (signal) ground (RS-232)
7	RXD	received data (RS-232)